

CANvu™ 355 Lite Low Profile

3.5" Colour Screen Display



Technical Data



Introduction

The CANvu 355 Lite Low Profile has a 3.5inch colour display. One of our most popular displays this variant has reduced I/O capabilities and a low profile housing giving a sleeker finish and larger buttons than the standard CANvu 355. The display is available in 4 variants with Standard housing, and increased I/O combinations as part of our family of compact, flexible, and rugged CAN bus monitors.

Designed for applications with reduced I/O requirements the display can therefore offering cost savings against the full I/O variants in the family of displays. It retains a single CAN input connection, plus a USB port.

The QVGA colour display can be viewed in full sunlight, and the unit is totally sealed and electronically extremely durable. The display can provide system control functions, alarm functionality, and has configurable data logging capability.

Key Features

- 1x CANbus, 1 x RS232 Connection
- Large Tactile Buttons
- Cost Effective Colour Display
- Data Logging & Control Capability
- Wi-Fi Telematics Compatible
- Ruggedised Low Profile Display
- J1939/NMEA 2000/Tier 4 Support
- IP66 Front & IP67 Rear

ADDRESS

CANtronik Limited, 4A Factory Road,
Upton, Poole, Dorset, BH16 5SJ, UK

+44 (0) 1202 973023

info@cantronik.com



CANvu™ 355 Lite Low Profile

3.5" Colour Screen Display

Reliability

CANvu products continue to be successfully deployed in an enormously diverse range of applications where total reliability is vital.

All CANtronik products, bespoke or standard range are backed up by a dedicated central team of specialist engineers able to rapidly adapt any product for a specific application and to provide an unrivalled level of customer support.

The CANvu displays are also supported with a return to base extended 24-month Manufacture warranty against mechanical failure or material defects.

Software

Our SDK is offered for a one-off licence fee from which customers can develop their own bespoke application solution. Available are optional plugins for CANopen, J1939, NMEA 2000, and support hours are included should your engineers need any help along the way.

Alternatively, CANtronik can develop bespoke software to your specification using our experienced in house engineers.

Over the years our engineers have developed software for our displays to run rock crushers & mining machinery, measure performance of spraying equipment, acting as battery monitors, boat gyro stabilisers, plus many more including military and aerospace applications.

Also available is our CANvu™ Engine Monitor standard software for Industrial and Marine, which can be pre-loaded to our displays receiving and displaying J1939 engine and transmission data, including common Tier4 parameters, with active alarms (from DM1) & NMEA 2000 data, where supported.

Accessories

- Cable Harnesses
- Protective Sun Covers
- Mounting Kits
- Branding - Labels & Boxes

ADDRESS

CANtronik Limited, 4A Factory Road,
Upton, Poole, Dorset, BH16 5SJ, UK

+44 (0) 1202 973023

info@cantronik.com



CANvu™ 355 Lite Low Profile

3.5" Colour Screen Display

Specifications

Hardware	
CPU	Processor is Freescale iMX 286, running 454 MHz
Flash Memory	128 MB NAND
SDRAM	128 MB
Electrical	
Display	a-Si TFT LCD 3.5"
Resolution	320 (H) x 240 (V) QVGA
Active Area	70.08mm (H) x 52.56mm (V)
Viewing Angle	130/110 degrees from 6 O'clock
Number of Colours	64K
Contrast Ratio	300:1
Brightness	750 NIT
Power Requirements	10V to 32V DC
Sounder	Internal Buzzer
Connection	(1) 12 Pin Deutsch DT04-12PA Moulded in Receptacle
Communications	1 X RS232, 1 X CAN Bus 2.0B (1 isolated), USB2.0
Environmental	
Operating Temperature	-40 to +70 Degrees Celsius
Storage Temperature	-40 to +80 Degrees Celsius
Degree of Protection	IP 66 front IP 67 back
Mechanical	
Case Material	ABS
Case Colour	Black
Dimensions	116mm (W) x 116mm (H) Front x 41mm rear (D) and 96mm rear (WxH)
Part Number	
900355L_LP	CANvu™ 355 Lite - 3.5" Colour Screen Low Profile Display

ADDRESS

CANtronik Limited, 4A Factory Road,
Upton, Poole, Dorset, BH16 5SJ, UK

+44 (0) 1202 973023

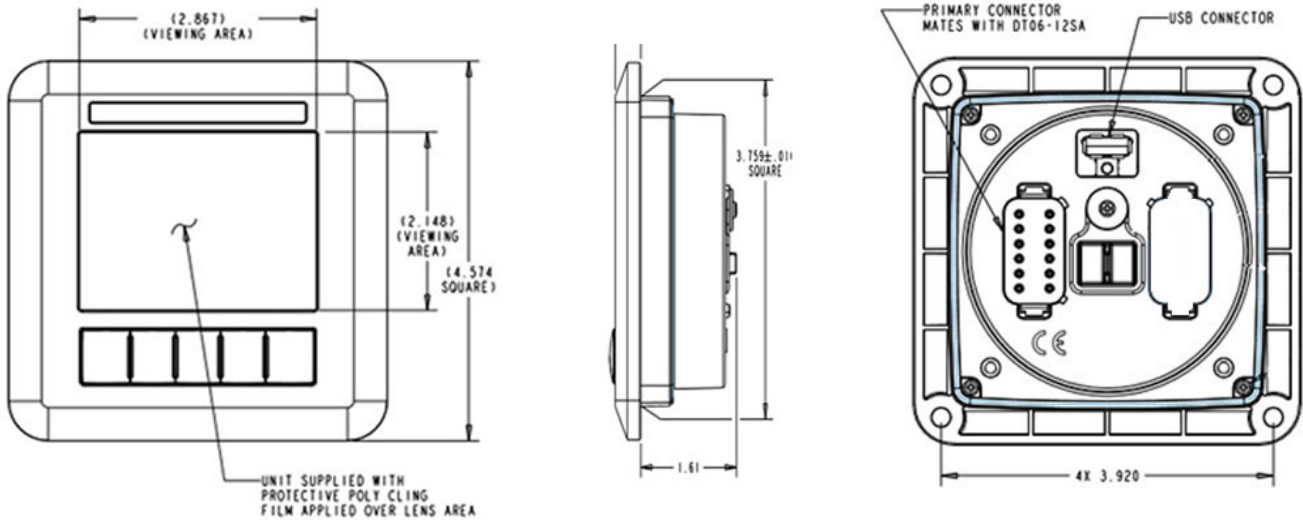
info@cantronik.com



CANvu™ 355 Lite Low Profile

3.5" Colour Screen Display

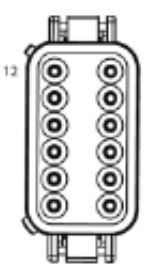
Dimensions



Connectors

Primary

1	Ground
2	Power ¹
3	RS232 Transmit
4	Ground
5	Ground
6	RS232 Receive
7	CAN Data L
8	CAN Data H
9	Not Used
10	Not Used
11	Not Used
12	Not Used



Note 1. (10-32V DC) Supply should be protected by 1A – Rated circuit breaker/ fuse.

IMPORTANT NOTICE

Safety Warning: Please note analogue input voltages should not exceed the supply voltage or damage may occur. No power should be present on the harness during connection. USB port should not be used for charging external equipment such as mobile phones.

Connect Harness 1 (Primary) noting correct orientation of connector. Ensure it is fully mated so the connector latches into place.

ADDRESS

CANtronik Limited, 4A Factory Road,
Upton, Poole, Dorset, BH16 5SJ, UK

+44 (0) 1202 973023

info@cantronik.com

